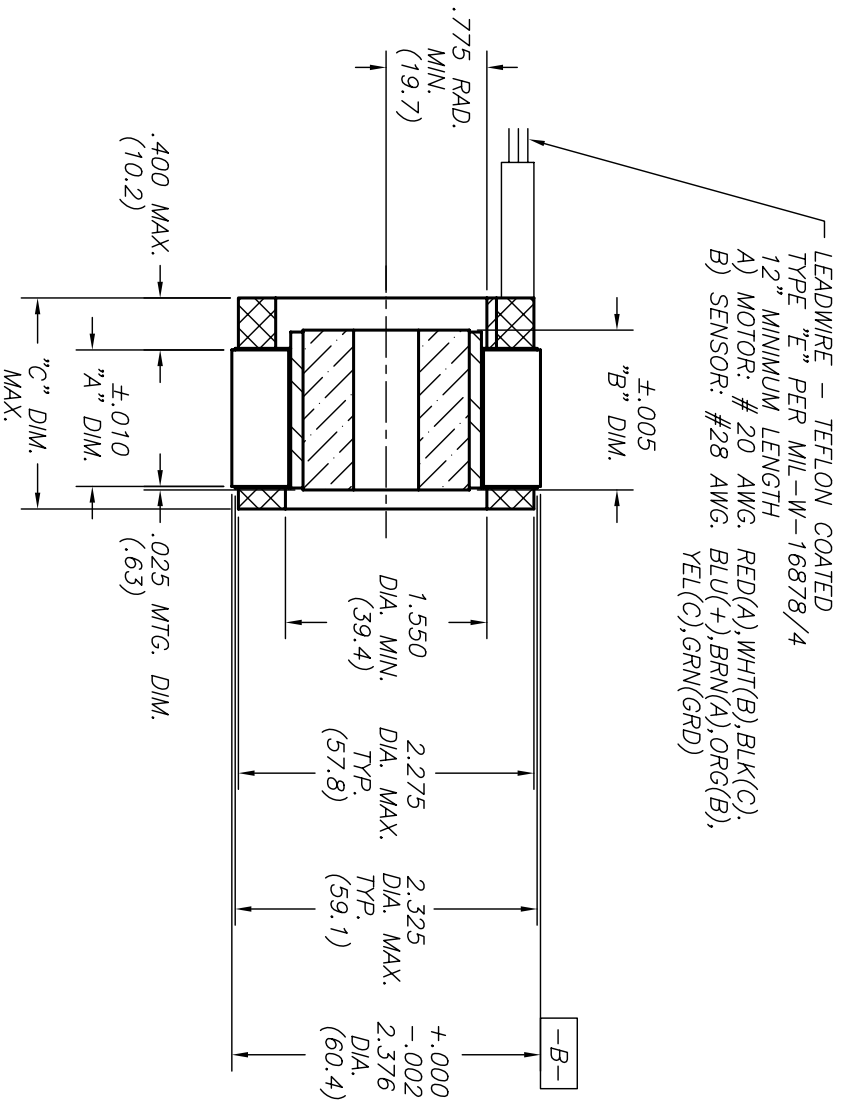
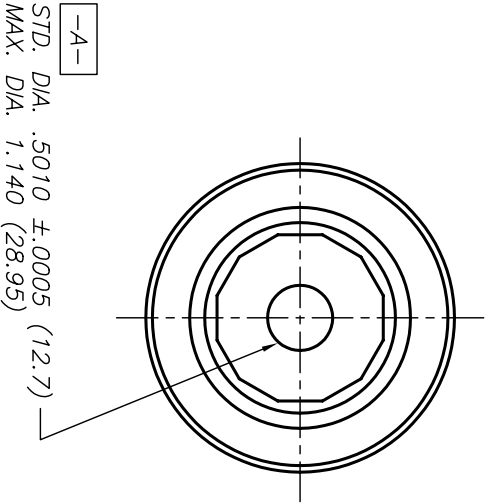


REVISION			DATE	APPROVED
ECN	LTR			
B		REVISE AND REDRAW	6/97	BWT

MODEL	"A" DIM.	"B" DIM.	"C" DIM.
HT02300	.250 (6.4)	.430 (10.9)	.824 (20.9)
HT02301	.650 (16.6)	.830 (21.1)	1.224 (31.1)
HT02302	1.050 (26.7)	1.230 (31.3)	1.624 (41.3)
HT02303	1.450 (36.9)	1.630 (41.4)	2.024 (51.4)
HT02304	1.850 (47.0)	2.030 (51.6)	2.424 (61.6)
HT02305	2.250 (57.2)	2.430 (61.8)	2.824 (71.7)



1. MOTOR SUPPLIED AS TWO SEPARATE COMPONENTS, ROTOR ASSEMBLY AND STATOR ASSEMBLY.
2. DIAMETERS -A- AND -B- TO BE CONCENTRIC WITHIN .002 WHEN MOUNTED.
3. MOUNTING SURFACE BETWEEN 2.376 AND 2.325 DIAMETERS ON BOTH SIDES.

UNLESS OTHERWISE SPECIFIED DIMENSIONS ARE IN INCHES TOLERANCES ON		DRAWSMAN:	DATE:
ANGLES 3 PLACE DEC ± .005		BWT	6/97
MATERIAL DO NOT SCALE		CHECKER:	
FINISH		ENGINEER:	
CUSTOMER:			
DWG NUMBER B 00214		Emotek Corp 10002-B East 43rd St. South TULSA, OK 74148	
DRAWING NUMBER HT02300-X0X		TITLE: OUTLINE DRAWING FRAMELESS MOTOR	
SCALE:		SHEET:	OF