

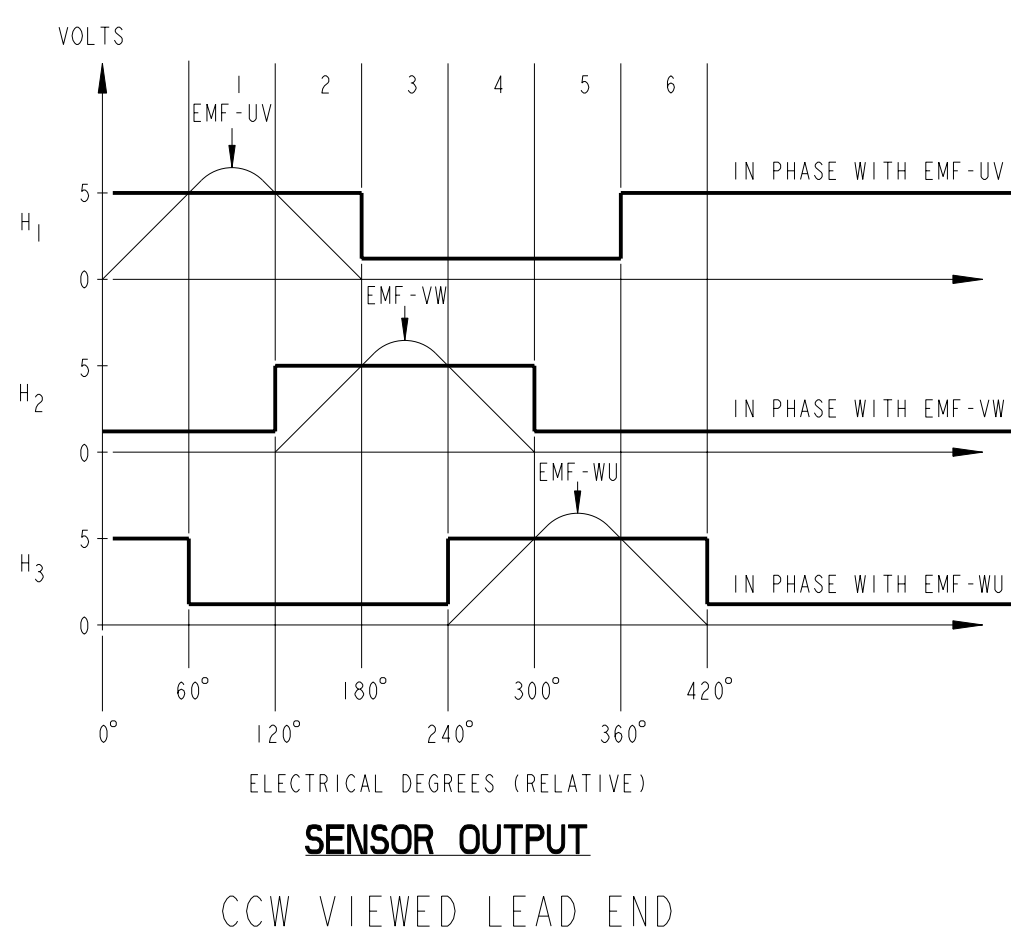
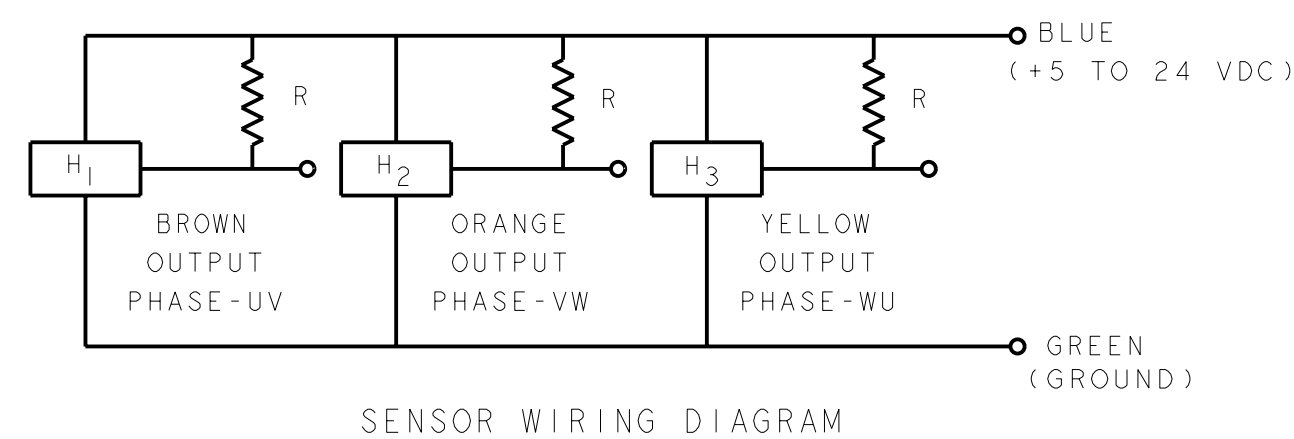
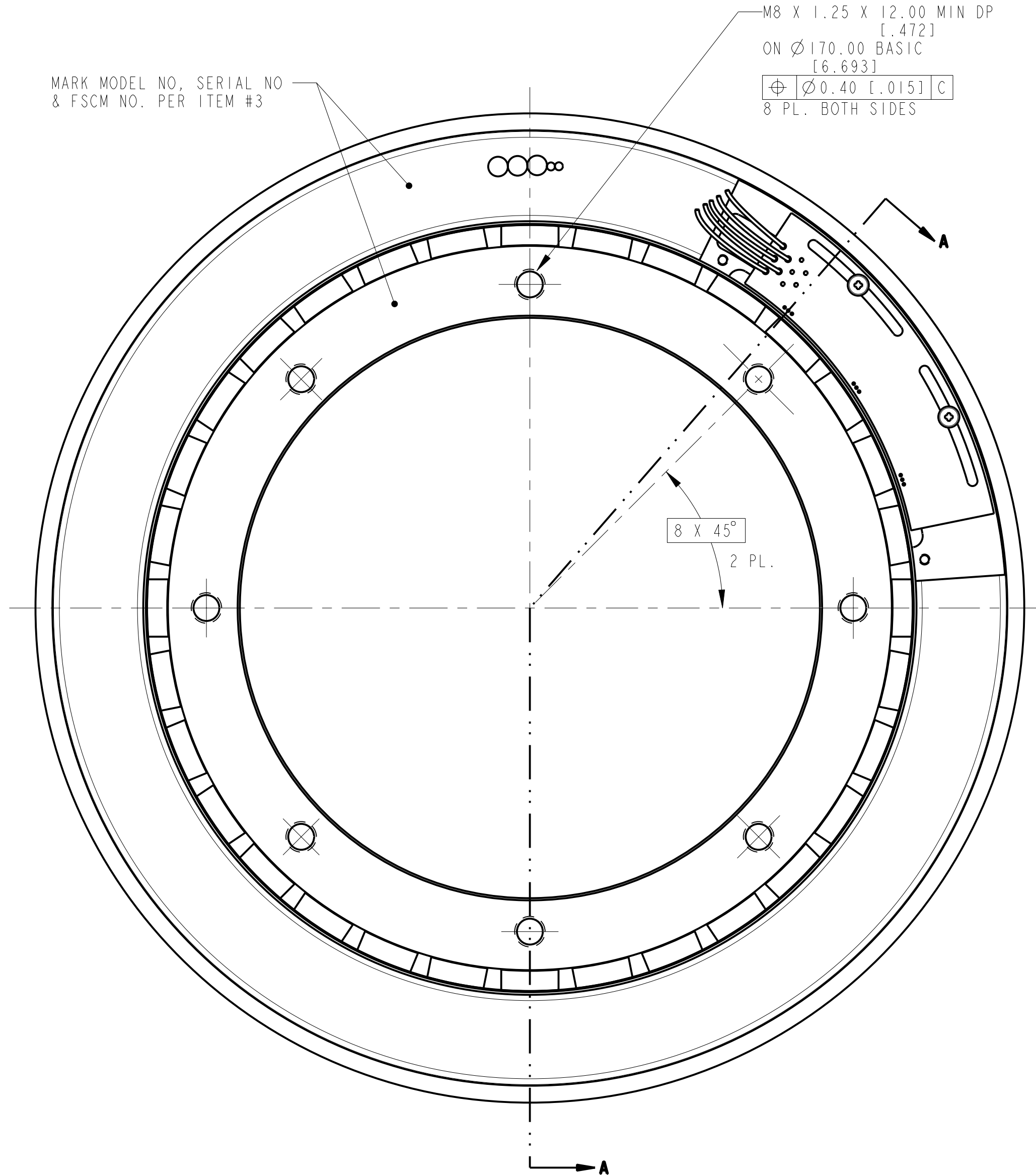
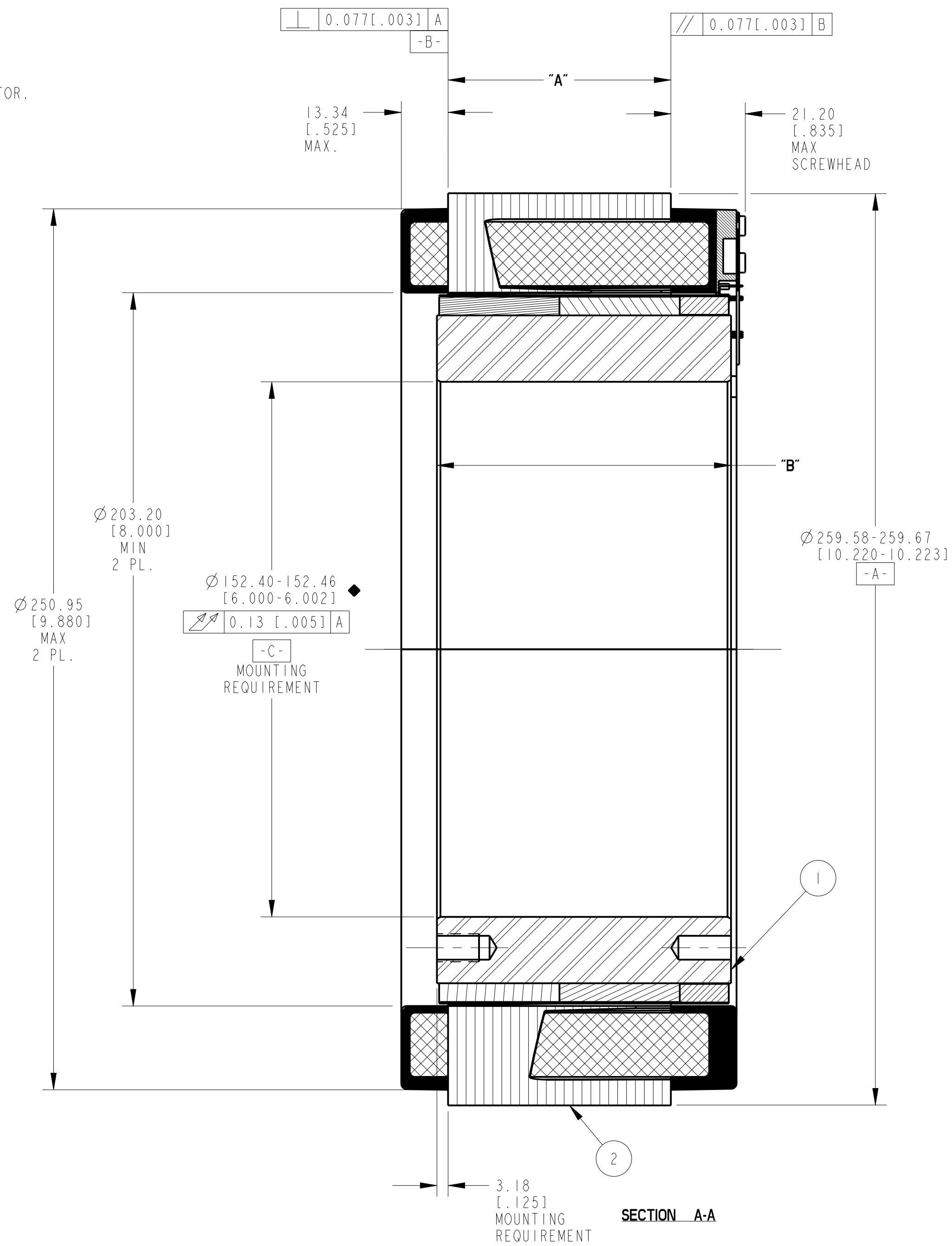
REV	ECN NO.	DESCRIPTION	DATE	APPROVED

- NOTES:
- FOR A C.C.W. ROTATION, AS VIEWED FROM LEAD END, ENERGIZE PER EXCITATION SEQUENCE BELOW.
  - MOTOR SUPPLIED AS TWO SEPARATE COMPONENTS, ARMATURE & SENSOR ASSEMBLY AND FIELD ASSEMBLY.
  - R=1.5k OHMS APPROXIMATELY (CUSTOMER SUPPLIED).
  - EMF-UV, EMF-VW, AND EMF-WU IS BACK EMF OF MOTOR PHASES UV, VW, AND WU ALIGNED WITH SENSOR OUTPUT SHOWN FOR CCW ROTATION ONLY.
  - MINIMUM MOUNTING SURFACE FROM 251.71[9.910] TO 259.60[10.220] BOTH SIDES.
  - DIMENSIONS IN BRACKETS [ ] ARE ENGLISH UNITS FOR REFERENCE ONLY.
  - NO ANGULAR RELATIONSHIP BETWEEN MOUNTING HOLES ON EITHER SIDE OF ROTOR.
  - ROHS (DIRECTIVE 2002/95/EC AND AMMENDMENTS) COMPLIANCE REQUIRED.

**MOTOR LEADS :**  
 #16 AWG, TEFLON INSULATED, U.L. 1199  
 3 LEADS, 400 MM [15.75"] MIN  
 1- BLUE 1-BROWN 1-VIOLET

**THERMISTOR LEADS :**  
 #26 AWG, TEFLON INSULATED  
 2 LEADS, 400 MM [15.75"] MIN  
 1-BLUE 1-RED

**SENSOR LEADS :**  
 #26 AWG, TEFLON COATED PER MIL-W-22750/11  
 5 LEADS, 400 MM [15.75"] MIN  
 1-BLUE 1-GREEN 1-BROWN 1-ORANGE 1-YELLOW



STEP	POWER CONNECTION		
	PHASE "U" BLUE	PHASE "V" BROWN	PHASE "W" VIOLET
1	(+)	(-)	(-)
2	(+)	(-)	(-)
3	(-)	(+)	(-)
4	(-)	(+)	(-)
5	(-)	(-)	(+)
6	(-)	(-)	(+)

EXCITATION SEQUENCE TABLE

TABLE 1

MODEL NUMBER	ARMATURE ASSY H.V. INSULATION	ARMATURE ASSY STD. INSULATION	FIELD ASSEMBLY	DIM "A"	DIM "B"
KBMS-79X01	946621/01X	946622/01X	946623/01	31.75 [1.250]	52.07 [2.050]
KBMS-79X02	946621/02X	946622/02X	946623/02	63.50 [2.500]	83.82 [3.300]
KBMS-79X03	946621/03X	946622/03X	946623/03	127.00 [5.000]	147.07 [5.790]

ITEM	QTY	IDENTIFYING NO.	DESCRIPTION
3	AR	IM-2709	MARKING PROCEDURE
2	I	SEE TABLE	ARMATURE ASSY
1	I	SEE TABLE	FIELD ASSEMBLY

LIST OF PARTS

3	AR	IM-2709	MARKING PROCEDURE
2	I	SEE TABLE	ARMATURE ASSY
1	I	SEE TABLE	FIELD ASSEMBLY

UNLESS OTHERWISE SPECIFIED:  
 REMOVE ALL SHARP BURRS AND BREAK ALL SHARP EDGES  
 X DECIMAL PLACES ±.4 [0.015]  
 XX DECIMAL PLACES ±.13 [0.005]  
 ANGULAR DIMENSIONS ±1°

INLAND MOTOR  
 501 FIRST STREET  
 RADFORD, VIRGINIA 24141

OUTLINE  
 KBMS-79XXX-X00

SCALE: 1:000

REV --

THIS DOCUMENT IS ONLY FOR USE BY THE INTENDED RECIPIENT AND CONTAINS KOLLMORGEN CONFIDENTIAL INFORMATION

Pro/E Instance Name: KBMS7901EIN\_946620  
 Pro/E Drawing Name: 946620  
 Pro/E Model Type: ASSEM  
 Pro/Engineer Drawing

METRIC DRAWING

SIGNIFICANT PRODUCT CHARACTERISTIC

CRITICAL PRODUCT CHARACTERISTIC

DO NOT SCALE DRAWING. USE DIMENSIONS ONLY. ALL DIMENSIONS ARE IN MILLIMETERS UNLESS OTHERWISE SPECIFIED. DIMENSIONS IN BRACKETS [ ] ARE IN INCHES AND ARE FOR REFERENCE ONLY. INTERPRET GEOMETRIC SYMBOLS PER ANSI Y14.5M-1982

DATE: 10-Jul-09  
 CHECKED BY: LWT  
 DATE: 17-Sep-09  
 APPROVED BY: AG

FSCM 11384  
 SIZE D  
 DWG. NO. 946620  
 SCALE: 1:000  
 JOB NO.:  
 SHEET 1 OF 1