

- NOTES:
 1. FOR A CCW ROTATION, AS VIEWED FROM LEAD END, ENERGIZE PER EXCITATION SEQUENCE BELOW.
 2. MOTOR SUPPLIED AS TWO SEPARATE COMPONENTS, ARMATURE & SENSOR ASSEMBLY AND FIELD ASSEMBLY.
 3. R=1.5k OHMS APPROXIMATELY (CUSTOMER SUPPLIED).
 4. EMF-UV, EMF-VW AND EMF-WU IS BACK EMF OF MOTOR PHASES UV, VW AND WU ALIGNED WITH SENSOR OUTPUT SHOWN FOR CCW ROTATION ONLY.
 5. MINIMUM MOUNTING SURFACE FROM 318.77 [12.550] TO 331.47 [13.050] BOTH SIDES.
 6. DIMENSIONS IN BRACKETS [] ARE ENGLISH UNITS FOR REFERENCE ONLY.
 7. NO ANGULAR RELATIONSHIP BETWEEN MOUNTING HOLES ON EITHER SIDE OF ROTOR.
 8. RoHS (DIRECTIVE 2002/95/EC AND AMMENDMENTS) COMPLIANCE REQUIRED.

MOTOR LEADS :
 #12 AWG, TEFLON INSULATED, U.L. 1199
 3 LEADS, 400 MM [15.75"] MIN
 1- BLUE 1- BROWN 1- VIOLET

THERMISTOR LEADS :
 #26 AWG, TEFLON INSULATED
 2 LEADS, 400 MM [15.75"] MIN
 1- BLUE 1- RED

SENSOR LEADS:
 #26 AWG, TEFLON COATED PER MIL-W-22759/11
 5 LEADS, 400 MM [15.75"] MIN
 1- BLUE 1- GREEN 1-BROWN 1-ORANGE 1-YELLOW

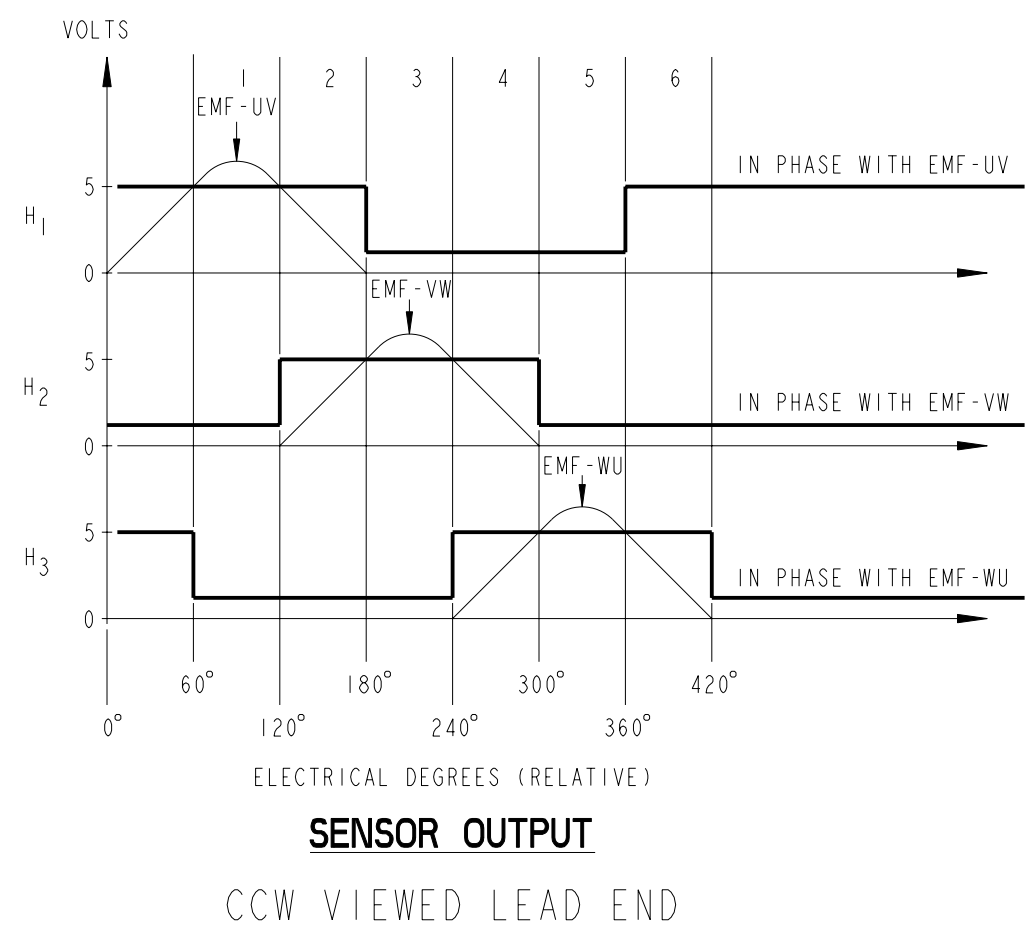
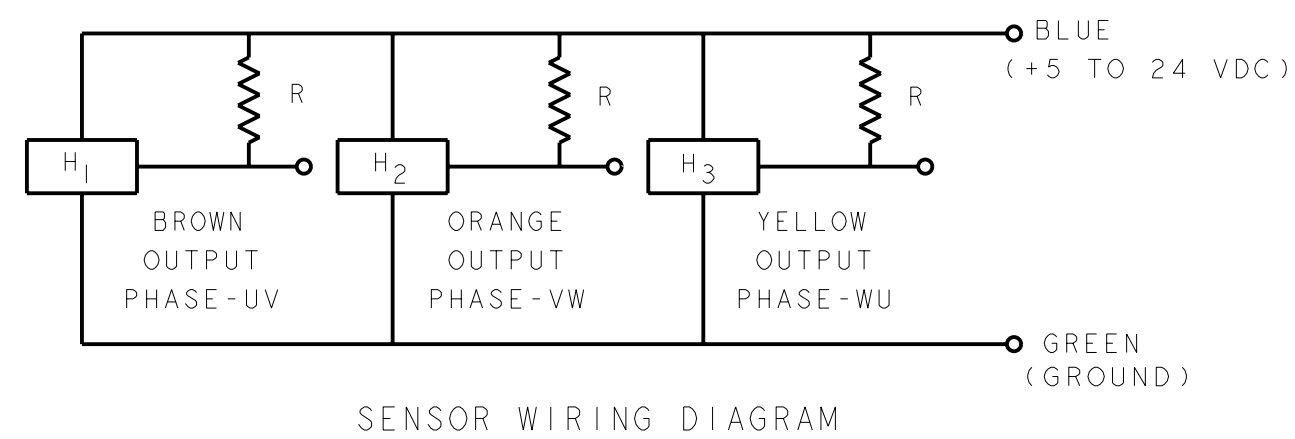
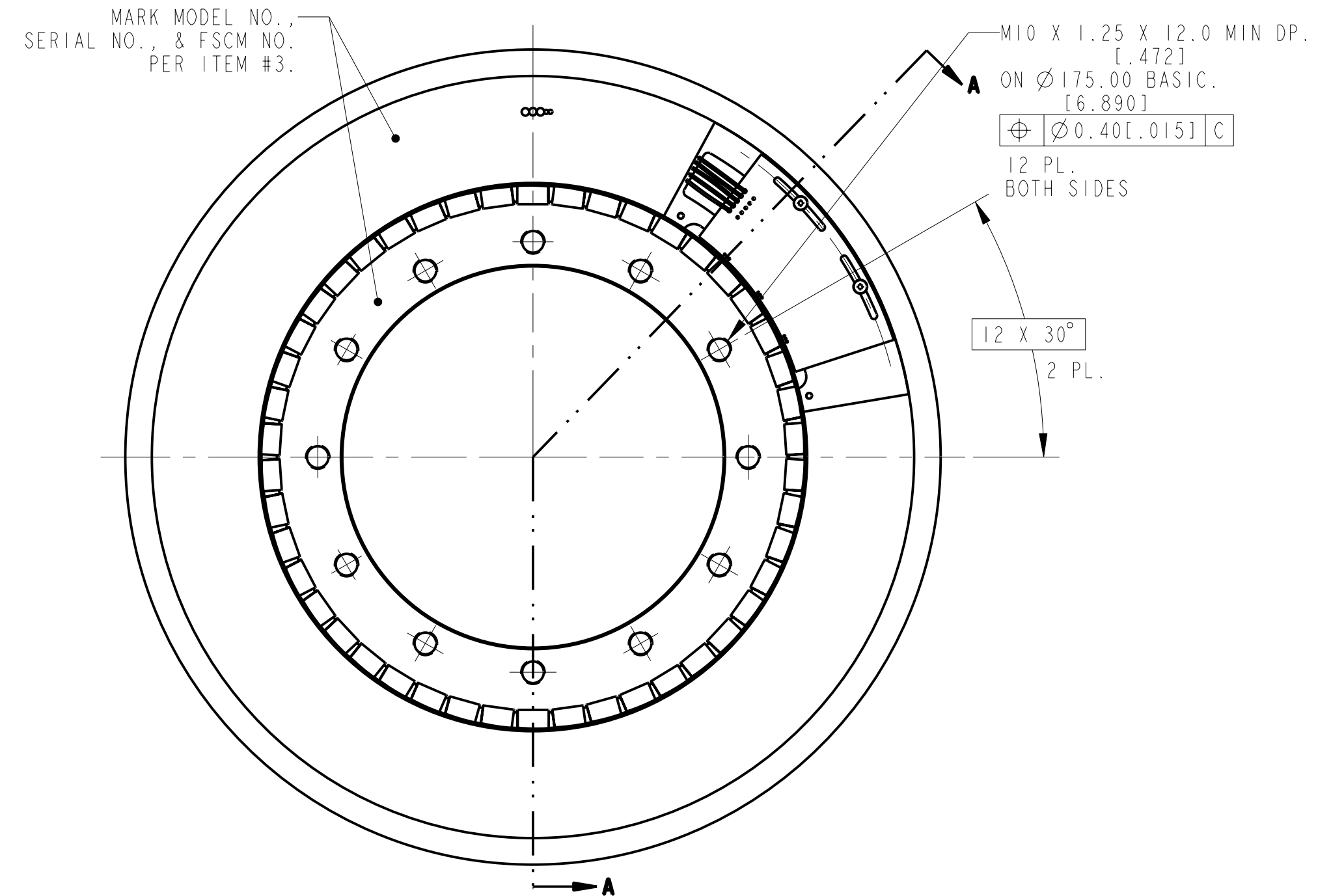
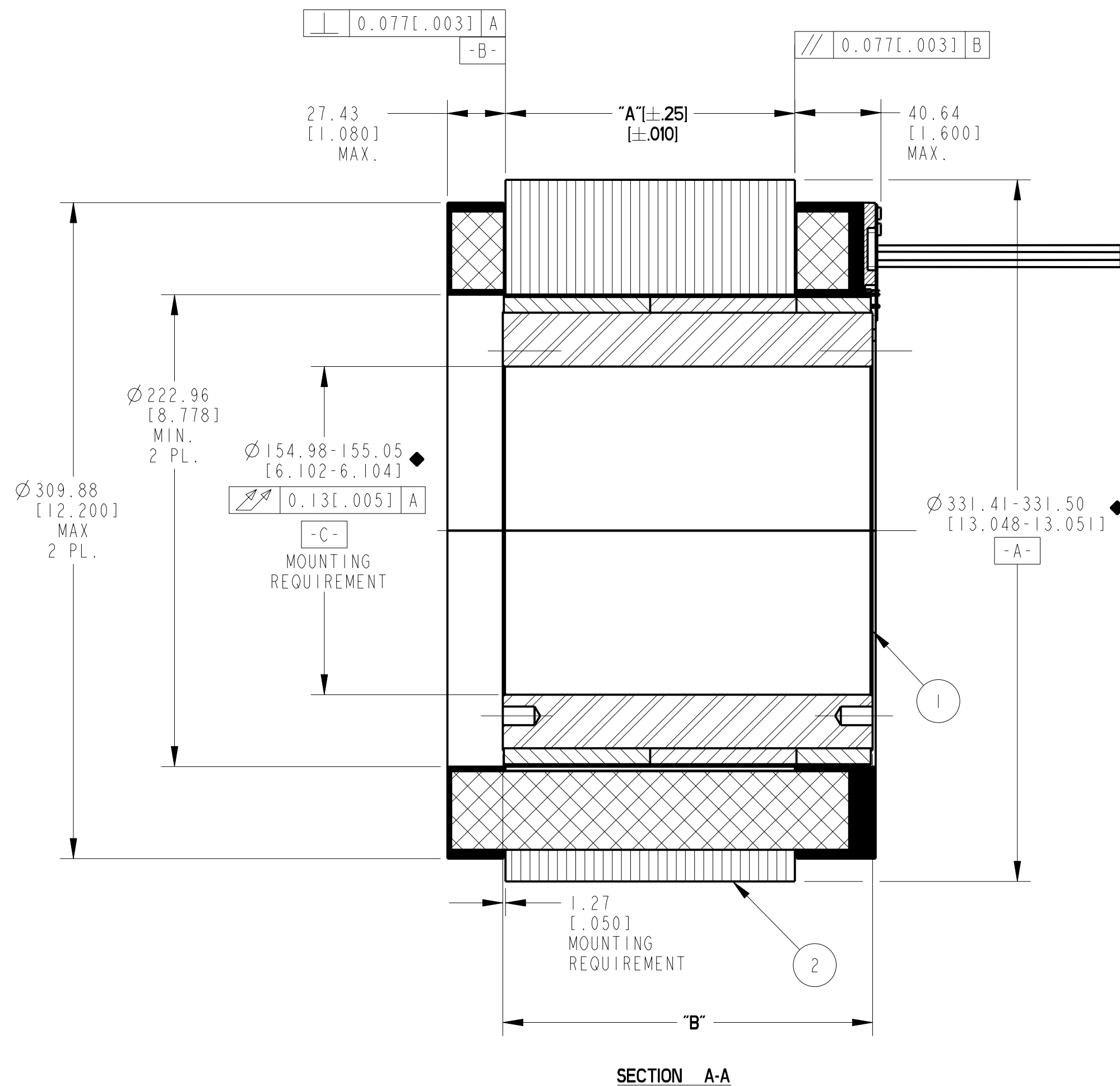


TABLE - 1

MODEL NUMBER	ARMATURE ASSY H.V. INSULATION	ARMATURE ASSY STD. INSULATION	FIELD ASSY	DIM "A"	DIM "B"
KBMS-88X01	946240/01X	946241/01X	946242/01	67.56 [2.660]	105.41 [4.150]
KBMS-88X02	946240/02X	946241/02X	946242/02	136.65 [5.380]	174.63 [6.875]
KBMS-88X03	946240/03X	946241/03X	946242/03	205.74 [8.100]	243.84 [9.600]

POWER CONNECTION

STEP	PHASE "U" BLUE	PHASE "V" BROWN	PHASE "W" VIOLET
1	(+)	(-)	(-)
2	(+)	(-)	(-)
3	(-)	(+)	(-)
4	(-)	(+)	(-)
5	(-)	(-)	(+)
6	(-)	(-)	(+)

EXCITATION SEQUENCE TABLE

THIS DOCUMENT IS ONLY FOR USE BY THE INTENDED RECIPIENT AND CONTAINS KOLLMORGEN CONFIDENTIAL INFORMATION
 Pro/E Instance Name: KBMS-2011-946239
 Pro/E Drawing Name: 946239
 Pro/E Model Type: ASSEM
 Pro/Engineer Drawing

METRIC DRAWING

UNLESS OTHERWISE SPECIFIED: REMOVE ALL SHARP BURRS AND BREAK ALL SHARP EDGES. X DECIMAL PLACES ±.4 [0.015] XX DECIMAL PLACES ±.13 [0.005] ANGULAR DIMENSIONS ±1'

DO NOT SCALE DRAWING. USE DIMENSIONS ONLY. ALL DIMENSIONS ARE IN MILLIMETERS AND ARE FOR REFERENCE ONLY. INTERPRET GEOMETRIC SYMBOLS PER ANSI Y14.5M-1992

THIRD ANGLE PROJECTION

3	AR	IM-2709	MARKING PROCEDURE
2	I	SEE TABLE	ARMATURE ASSY
1	I	SEE TABLE	FIELD ASSEMBLY
ITEM	QTY	IDENTIFYING NO.	DESCRIPTION

LIST OF PARTS

KOLLMORGEN
 Inland Motor
 INLAND MOTOR
 501 FIRST STREET
 RADFORD, VIRGINIA 24141

OUTLINE
 KBMS-88XXX-X00

SCALE: 0.500
 JOB NO.:
 SHEET 1 OF 1

11384
 D
 946239

DATE: 06-JUL-09
 DATE: 18-SEP-09
 DATE: 18-SEP-09