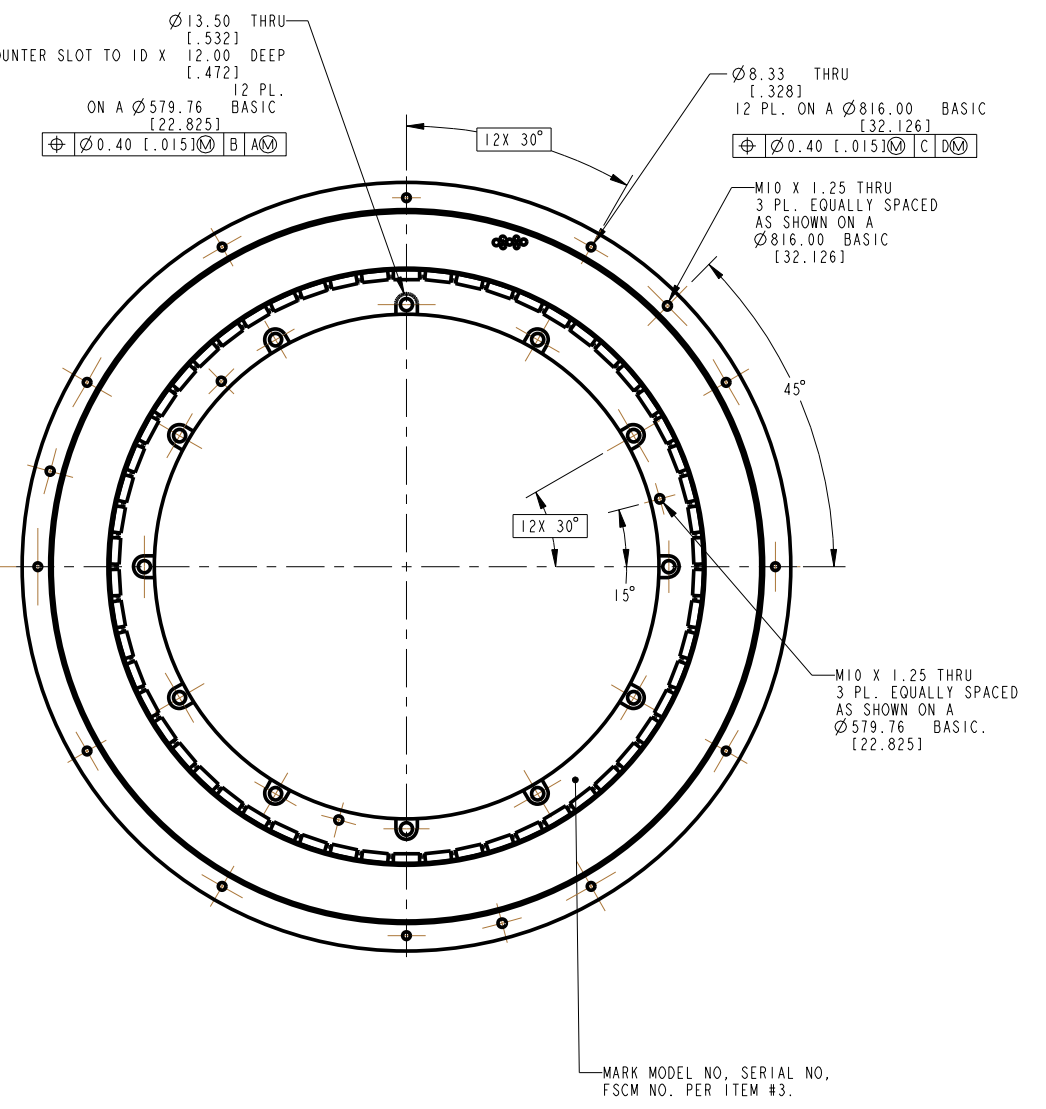
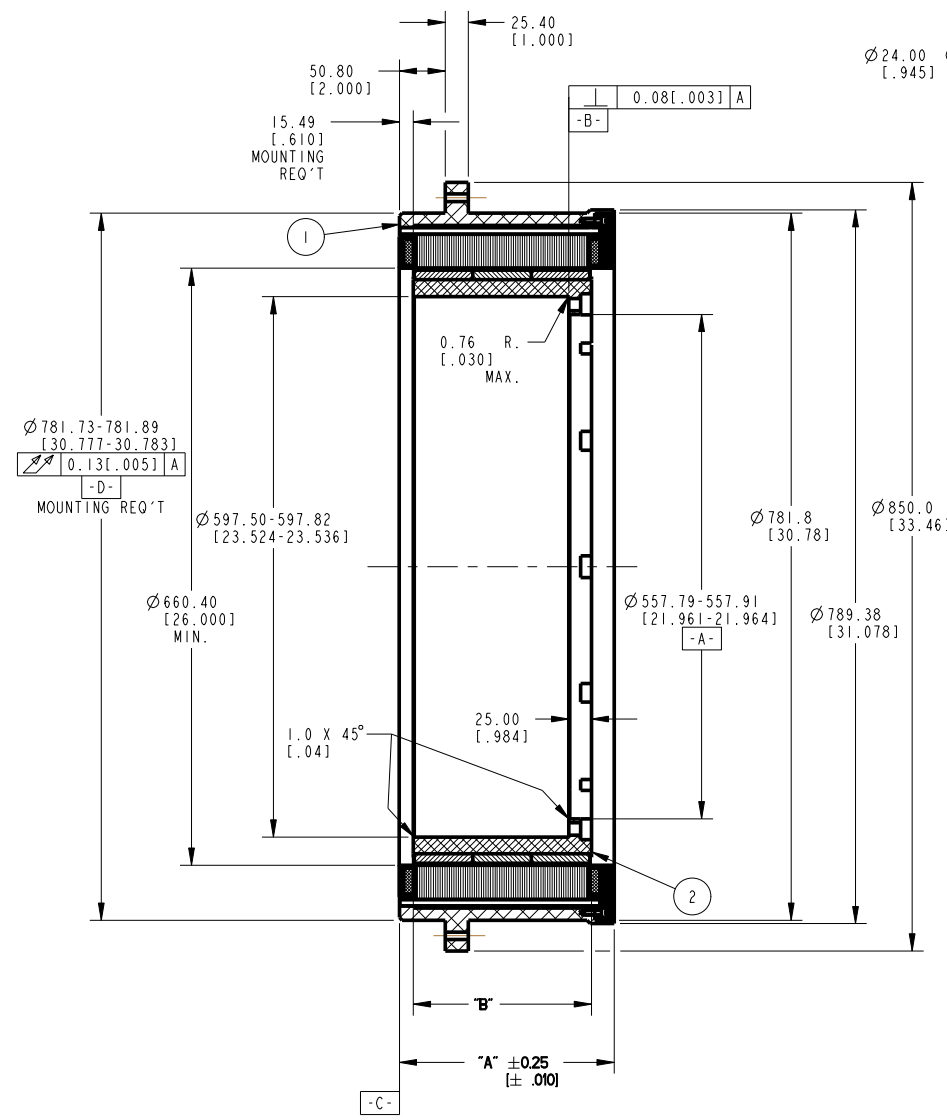
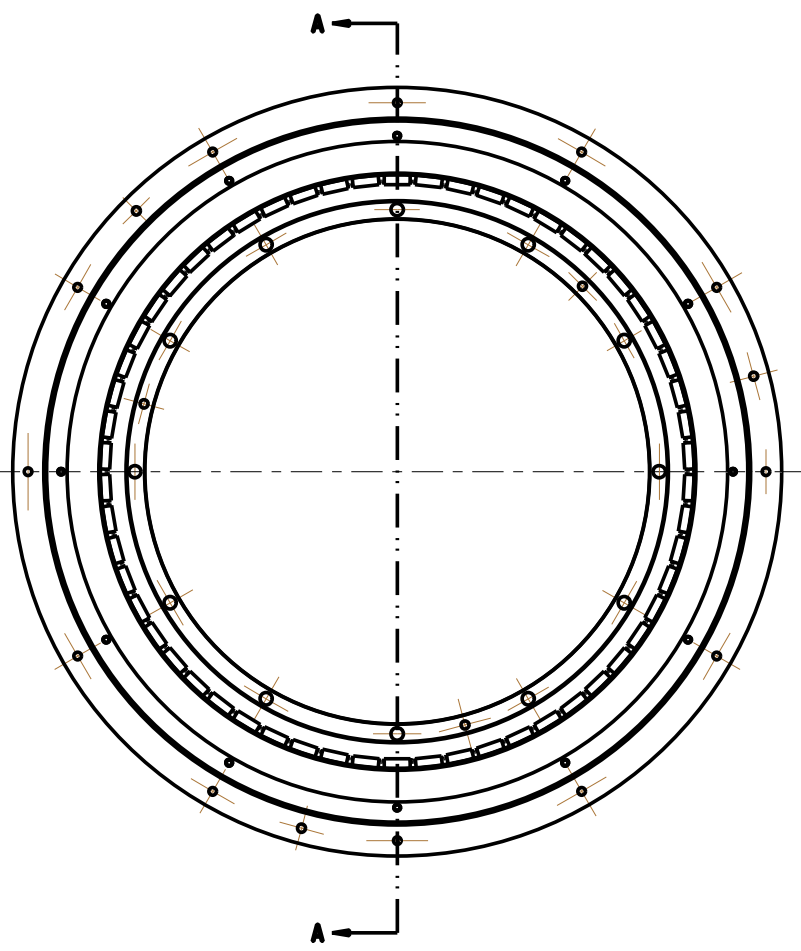


REVISION				
REV	ECN NO.	DESCRIPTION	DATE	APPROVED
A	R01-13452	SEE ECO	3-04-2010	T&B

- NOTES:
- FOR A C.C.W. ROTATION, AS VIEWED FROM LEAD END, ENERGIZE PER EXCITATION SEQUENCE BELOW.
 - MOTOR SUPPLIED AS TWO SEPARATE COMPONENTS, ARMATURE ASSEMBLY, AND FIELD ASSEMBLY.
 - DIMENSIONS IN BRACKETS [] ARE ENGLISH UNITS FOR REFERENCE ONLY.
 - HIGH STRENGTH ALLOY STEEL BOLTS MUST BE USED FOR MOUNTING. (METRIC CLASS 12.9, ASTM GRADE A574)
 - RoHS (DIRECTIVE 2002/95/EC AND AMENDMENTS) COMPLIANCE REQUIRED.

MOTOR LEADS:
 #10 AWG, TEFLON INSULATED, U.L. 1199
 3 LEADS, 900 mm [35"] MIN
 1- BLUE 1- BROWN 1- VIOLET

THERMISTOR LEADS:
 #26 AWG, TEFLON INSULATED
 4 LEADS, 900 mm [35"] MIN
 2- BLUE 2- RED



THIS DOCUMENT IS ONLY FOR USE BY THE INTENDED RECIPIENT AND CONTAINS KOLLMORGEN CONFIDENTIAL INFORMATION

STEP	POWER CONNECTION		
	PHASE "U" BLUE	PHASE "V" BROWN	PHASE "W" VIOLET
1	(+)	(-)	(-)
2	(+)	(-)	(-)
3	(+)	(+)	(-)
4	(-)	(+)	(-)
5	(-)	(-)	(+)
6	(-)	(-)	(+)

EXCITATION SEQUENCE TABLE

MODEL NUMBER	ARMATURE & HOUSING ASSEMBLY	FIELD ASSEMBLY	DIM "A"	DIM "B"
KBM-260X01	947663/01X	947668/01	172.62 [6.796]	132.08 [5.200]
KBM-260X02	947663/02X	947668/02	237.39 [9.346]	196.85 [7.750]
KBM-260X03	947663/03X	947668/03	302.16 [11.896]	261.62 [10.300]

3	AR	1M-2709	MARKING PROCEDURE
2	I	SEE TABLE	FIELD ASSEMBLY
1	I	SEE TABLE	ARMATURE HOUSING ASSEMBLY
ITEM	QTY	IDENTIFYING NO.	DESCRIPTION

LIST OF PARTS

UNLESS OTHERWISE SPECIFIED: REMOVE ALL SHARP BURRS AND BREAK ALL SHARP EDGES X DECIMAL PLACES ±.4 [0.015] XX DECIMAL PLACES ±.13 [0.005] ANGULAR DIMENSIONS ±1°		INLAND MOTOR 501 FIRST STREET RADFORD, VIRGINIA 24141	
DO NOT SCALE DRAWING; USE DIMENSIONS ONLY ALL DIMENSIONS ARE IN MILLIMETERS DIMENSIONS IN BRACKETS [] ARE IN INCHES AND ARE FOR REFERENCE ONLY		OUTLINE AND ASSEMBLY KBM-260XXX-X00	
SCALE: 0.250	FSCW 11384	SIZE D	DWG. NO. 947670
INTERPRET GEOMETRIC SYMBOLS PER ANSI Y14.5M-1982	REV A	JOB NO.:	SHEET 1 OF 1