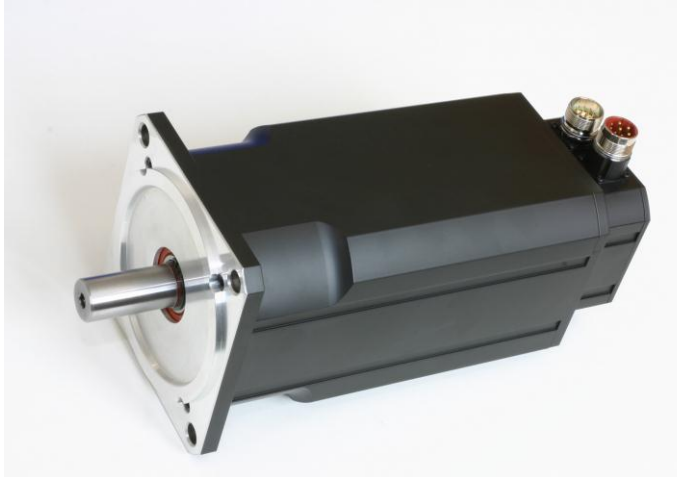
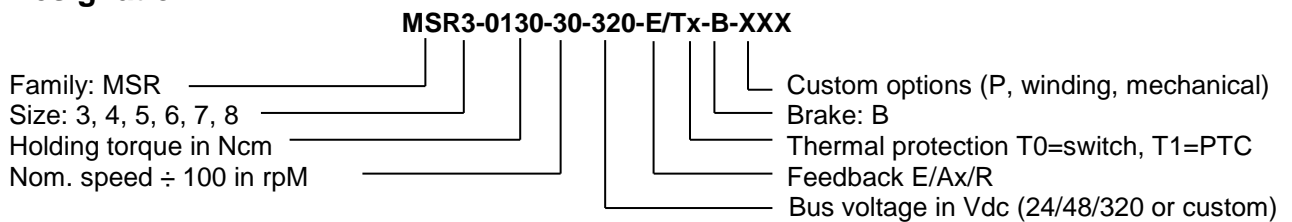


## MSR family of ruggedised BLDC servomotors



- MS series motors with ruggedisation features
- 6 pole, operational speed up to 6,000rpm
- Feedback options:
  - E encoder (2048 lines, TTL) with HE-emulation, Type CKS36 (-20 to +115°C)
  - A1 absolute single-turn (2048 lines, EnDat), Type ECN1313 (-40 to +115°C)
  - A2 absolute multi-turn (2048 lines, EnDat), Type EQN1325 (-40 to +115°C)
  - A3 absolute single-turn (2048 lines, Hiperface), Type SRS50 (-20 to +115°C)
  - A4 absolute multi-turn (2048 lines, Hiperface), Type SRM50 (-20 to +115°C)
  - R 2 pole resolver (-40 to +125°C)
- Holding brake option (24V)
- Standard connectors: Screw-type Intercontec
- Thermal protection: thermal switch (145°C) or PTC
- Smooth shaft or keyway option DIN 6885 (P)
- Custom options (special winding etc.)

### Designation:



### Special properties of MACCON ruggedised servomotors:

Protection category	IP67; protected against fine dust and sea-water
Operating temperature (environment)	-40° to 125°C
Bearings	Special wide-temperature range grease; Viton seals
Stator	Fully encapsulated (best thermal and protection levels)
Rotor	Magnets encapsulated and fully protected
Mounting bolts	VA stainless steel
Earth connection (PE)	Screw bolt for earthing and bonding
Screening	EMC-sealed; contact resistances <10mOhm
Drainage	Goretex protective vent (breathing valve)

### Dimensions, performance & winding data:

See standard MS motor datasheets at: <https://www.maccon.de/en/servo-motors/ms-series-servo-motors.html>  
 Special windings on request (24 to 560Vdc)

### MIL Option:

MI-Paint, camouflage green (Inertia70 AN11 or other)  
 Cable connections, screened, with water-tight PG-seals; standard cable length 3m